



AUNA SELECT

# VILLA PALACO

VITALJINA / KONAVLE



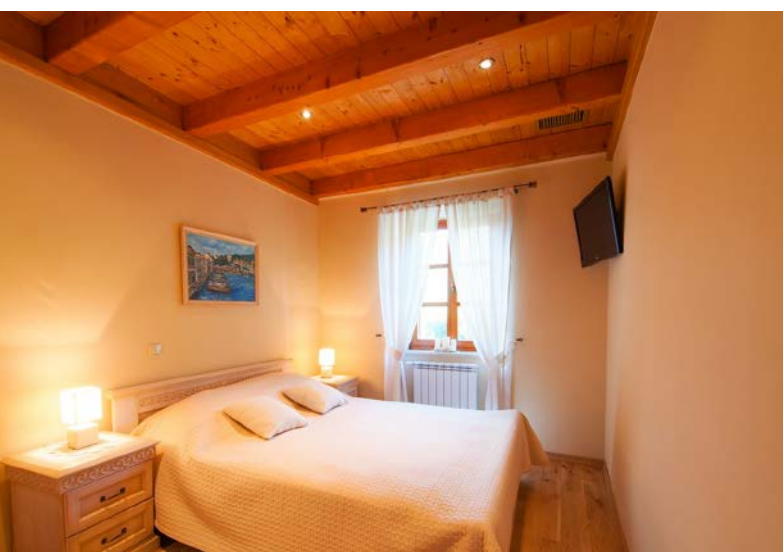
Located in southernmost Croatian village of Vitaljina in Konavle region, Villa Palaco is a private farmhouse since late 16th century.

It was completely renovated in 2012, preserving its authentic original form where natural materials - stone and wood - dominate throughout the house.

The property surrounded by lush Mediterranean vegetation spreads over 2000 m<sup>2</sup> with an outdoor swimming pool

and Jacuzzi, lawns and a summer terrace with barbecue and playground. It is ideal for those seeking tranquility, privacy and a relaxing atmosphere, together with exploring the entire Konavle region and its attractions.

The pleasant climate, clean air, walks by ancient vineyards and olive groves with beautiful views of the crystal clean sea and nature are just some of the characteristics that can be experienced in this beautiful region.





# VILLA PALACO • VITALJINA / KONAVLE

## INTERIOR

4 double-rooms , TV with USB port  
King size beds (180x210 cm)  
2 living rooms with TVs (cable channels & DVD)  
2 bathrooms (one with a massage shower, other with the Jacuzzi bath)  
Air-conditioning  
Wi-Fi throughout the whole property  
Fully equipped kitchen with dining area  
Terrace (veranda) with dining table in front of the kitchen, overlooking the pool and lawn

## POOL AREA

50 m<sup>2</sup> swimming pool (115 to 175 cm depth)  
8-person Jacuzzi bath with massage  
Smartphone controlled sound-system around the sundeck with internet radio and live stream option  
Outdoor shower & bathroom  
Fully equipped kitchen with dining area  
Terrace (veranda) with dining table in front of the kitchen, overlooking the pool and lawn

## SUMMER KITCHEN - "GLORIJET"

Traditional shaded terrace and a summer kitchen, with 5 meters-long table for 20 persons, made of 120-years old Croatian oak. "Glorijet" has a spacious 2.5 meters barbecue, bread oven, refrigerator, ice maker and oven.

Foot-tennis and Badminton-court.

Playground is floodlit for night play.

## TAVERN

Opened in 1885, it was initially used as olive mill for olive-oil production. It still has well preserved and restored original olive mill wheel. In the tavern there is a table for 16 persons, a fireplace for barbecue, a bar with stove, fridge, oven, and dishwasher machine. In a separate room there is a couch with TV set. The tavern has a stereo system where you can play music from CD, USB or connect your cell phone or an iPod.

## GAME ROOM

Enjoy playing pool (8 ft), darts, table football and table tennis.

---

## LOCATION • Points of Interest:

25.2 km from Dubrovnik Airport (DBV • 25 min drive)  
44 km from Dubrovnik (45 min drive)  
45 km from City Center (Lapad)

CONTACT US FOR ALL ENQUIRIES  
AND RESERVATION

+385 99 377 1807

+385 98 964 3558

reservations@aunaselect.com

www.aunaselect.com

AUNA  
SELECT